



EVENTS PROFILE

ABOUT US

Eagle Eye Interior design llc was formed in 2014 with diversified intrest in Turnkey Interior Fit out and Hospitality.

For turn-key projects, we have become a stalwart of the interior design industry with a strict focus on the highest of qualities no matter the demands of our clients.

We have satisfied clients with widely variable projects and requirements and received accolades for our service in developing hotels, malls, restaurants, bars/lounges, retail outlets, offices, villas, kiosks, exhibition stalls and Residential Appartments.

No matter how big we become, we treat all projects, from the smallest to the most ambitious, with the same level of diligence and excitement. With over 80 employees, 24 workstations, state-of-the-art joinery machines and dry and wet paint booths.

Eagle eye is equipped unlike most of its competitors to handle nearly all the challenges faced by most turn-key interior design companies.

With the highest of quality at affordable prices, we promise timely delivery, flawless installation and diligent after-sale service. We are here to continually support your patronage. We hope to develop a new and lasting relationship with you.



OUR SERVICES



EVENT MANAGEMENT

- Corporate Events
- Fashion Shows
- Weddings
- Exhibitions
- Promotions
- Commercial Shows
- Night Club Events

MODEL MANAGEMENT

- Female Models
- Male Models
- Event Hostess
- Promoters

SPECIAL EFFECTS

- Confetti Machines
- Co2 Jets
- Flame Machines
- LED & Laser shows

EVENT PRODUCTION

- Audio-Visual Equipments
- LED screens/Projections
- Translation Systems
- Furniture & Décor
- Backdrop & Staging

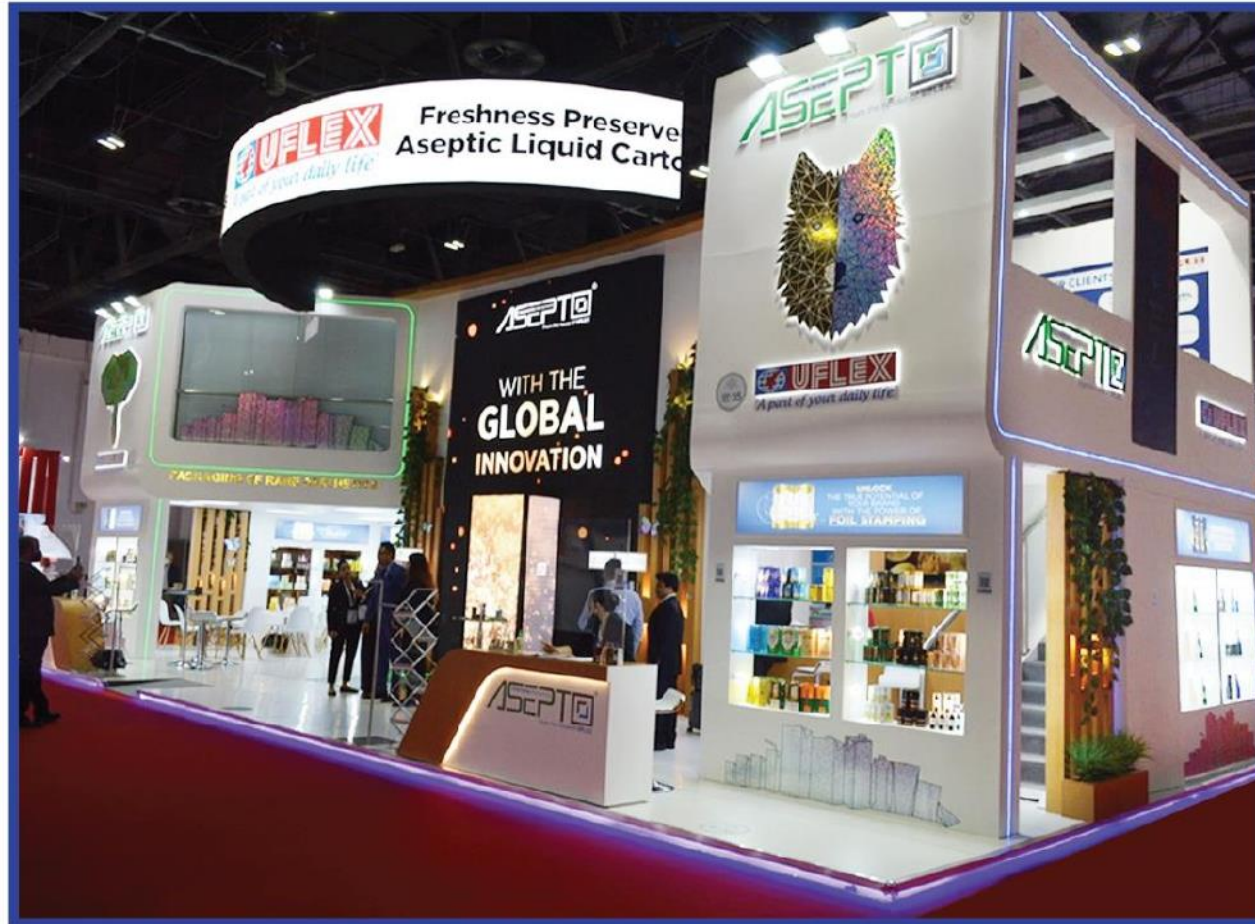
EXHIBITION STANDS



Sharjah Kids Festival

EXHIBITION STANDS

ASEPTO at Gulfood Manufacturing '21



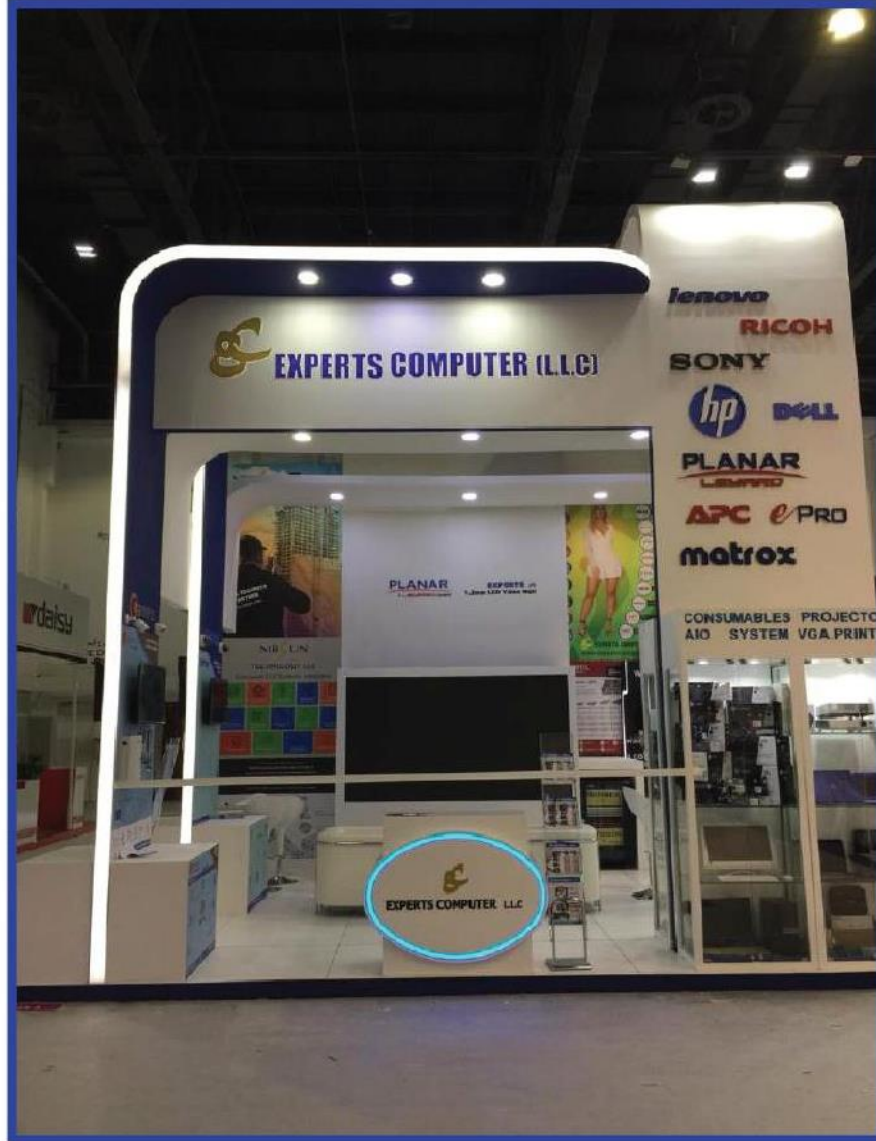
VNS TECHNOLOGIES@GITEX

EXHIBITION STANDS



EXPERTS COMPUTER@GITEX

EXHIBITION STANDS



EXHIBITION STANDS



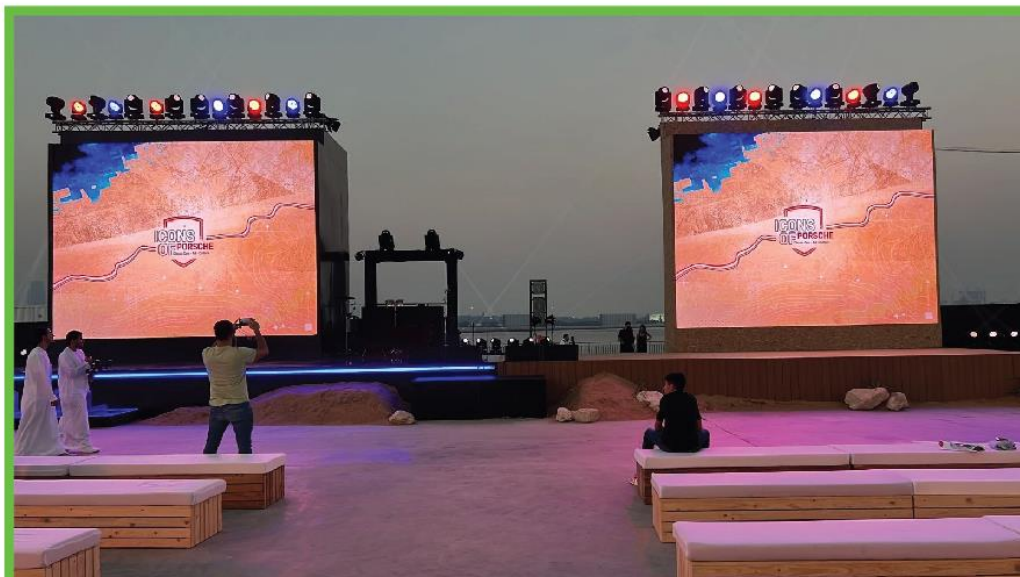
EVENTS

BEACH CANTEEN



EVENTS

Icons of Porsche@d3



Google Gaming Summit

EVENTS



EVENTS



Star Club Awards

EVENTS



Heritage Tent@KSA

EVENTS

SPLASH FASHION SHOW



EVENTS

AIRSHOW 2021



LEONARDO



BOEING

EVENTS



Dubai Fitness Challenge

EVENTS

Splash RedFest setup



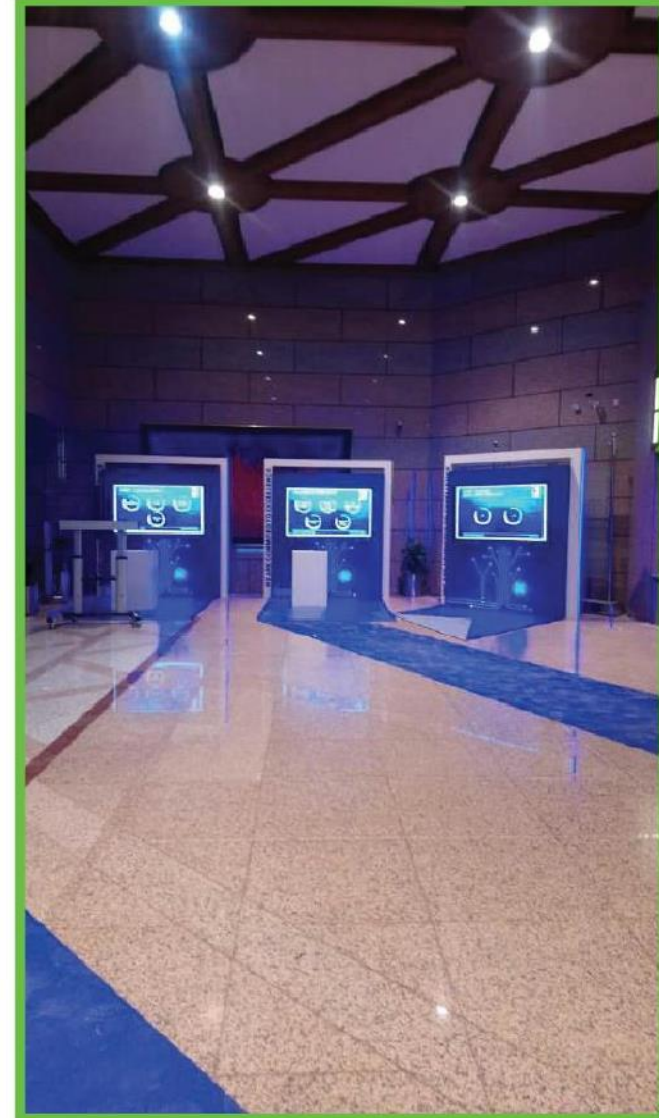
EVENTS

RTA Dubai Metro setup@Dubai Mall



EVENTS

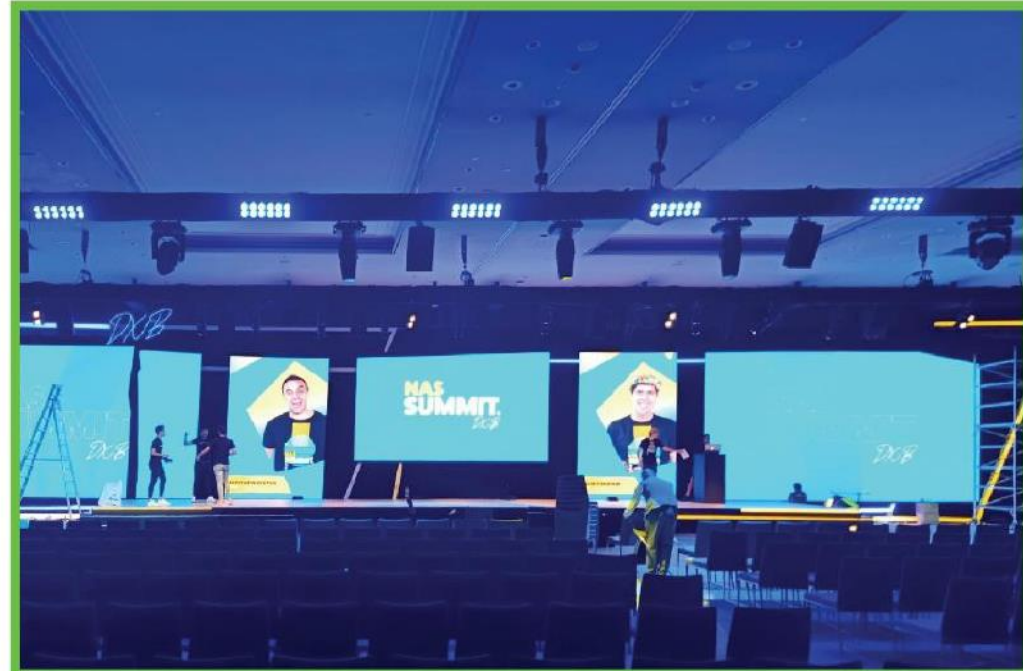
ADNOC



EVENTS



NAS Summit



EVENTS

GulFood 2022



EVENTS



**Christmas Market'21
at Global Village**

WOODEN AND STEEL FABRICATION



**food carts @ Bollwood park
at Dubai park and resort**

WOODEN AND STEEL FABRICATION



**facades @ Warner Bros.
Abu Dhabi**

WOODEN AND STEEL FABRICATION



**facades @ Warner Bros.
Abu Dhabi**

WOODEN AND STEEL FABRICATION



**facades @ Bollywood park and resort
at Dubai park and resort**

STORE SETUP



Window Setup
@Centrepont

STORE @Centrepoint SETUP



STORE SETUP

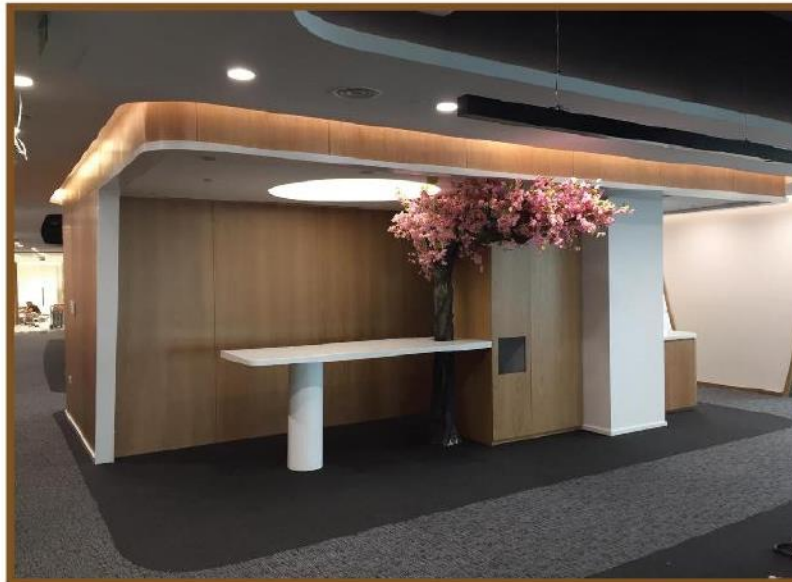


Centrepont
@Ibn Battuta Mall



Aster main office

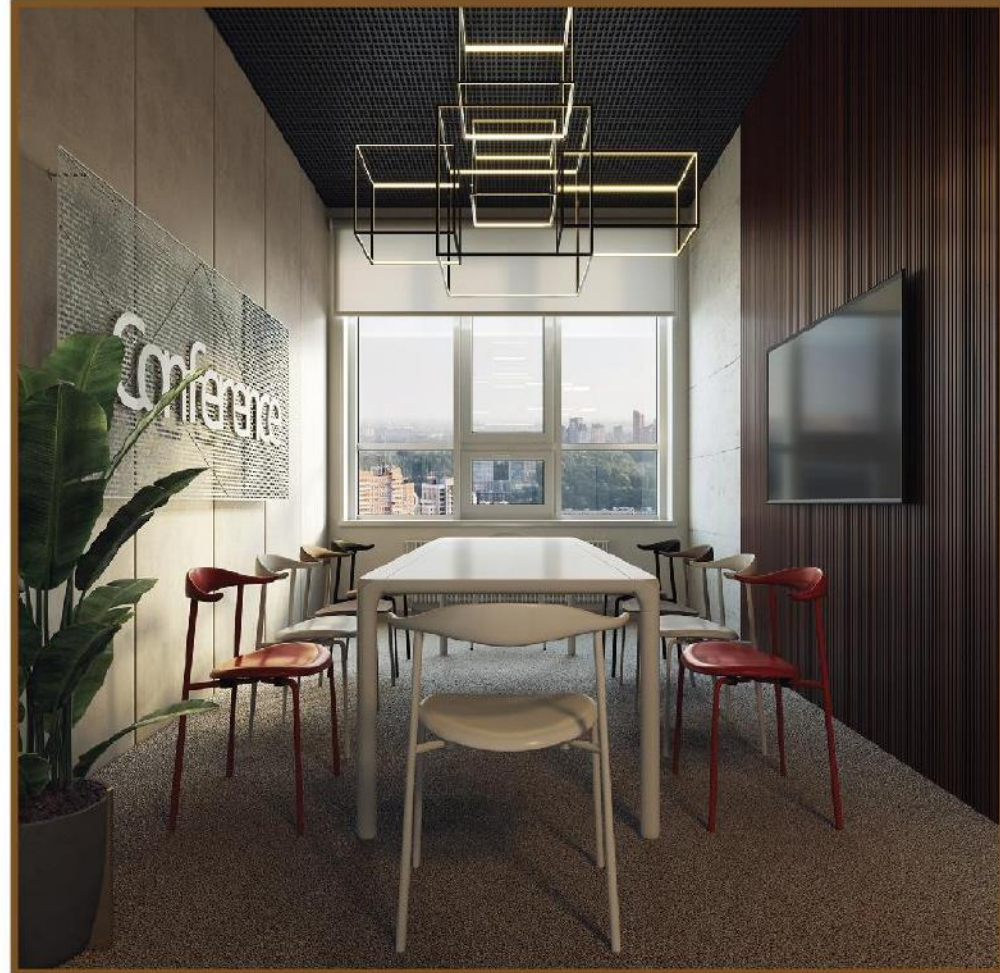
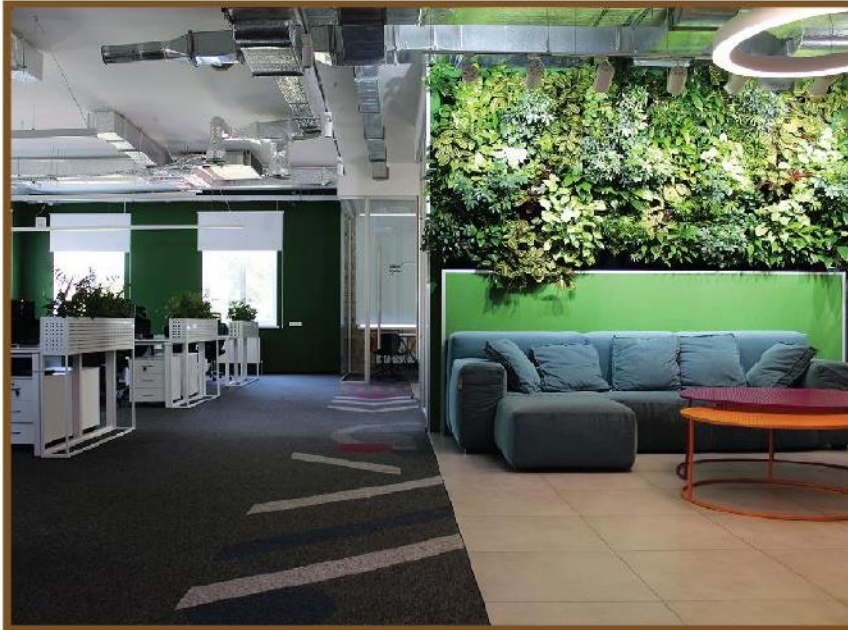
Interiors



Interiors



Interiors



Interiors



Interiors



Corporate

Events



United Nations Industrial
Development Organization @ Emirates Palace

Corporate

Events

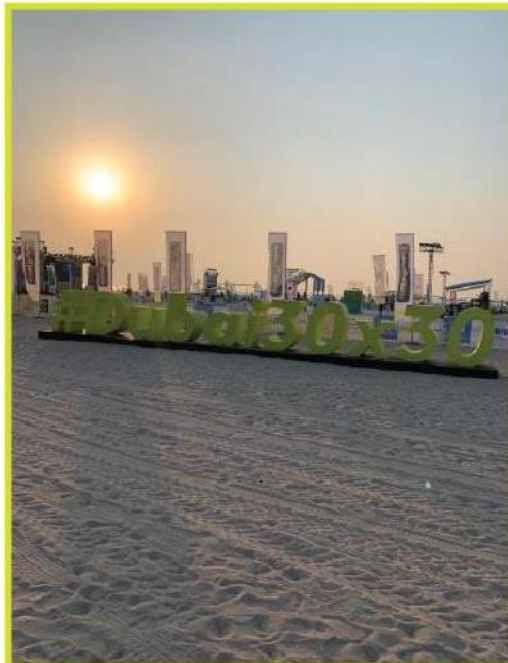


Signage



@centrepont

Signage



WEDDINGS



WEDDING SERVICES

- *Venue arrangement*
- *Stage Design*
- *Flower Arrangements*
- *Sound & Lights*
- *Special Effects*
- *Bridal Entrance*
- *Entertainment*
- *Video & Photography*
- *Catering*
- *Limousine services*

PRINTING

Our mashines for high quality printing



PRODUCTION

PRINTING

PRODUCTION



- We print on flat rigid surfaces as Aluminum / Glass / Acrylic / MDF / Wood / Carpets / Sheets Corrugated / Forex / Canvas
- High-quality LARGE format digital banners



PRINTING

PRODUCTION

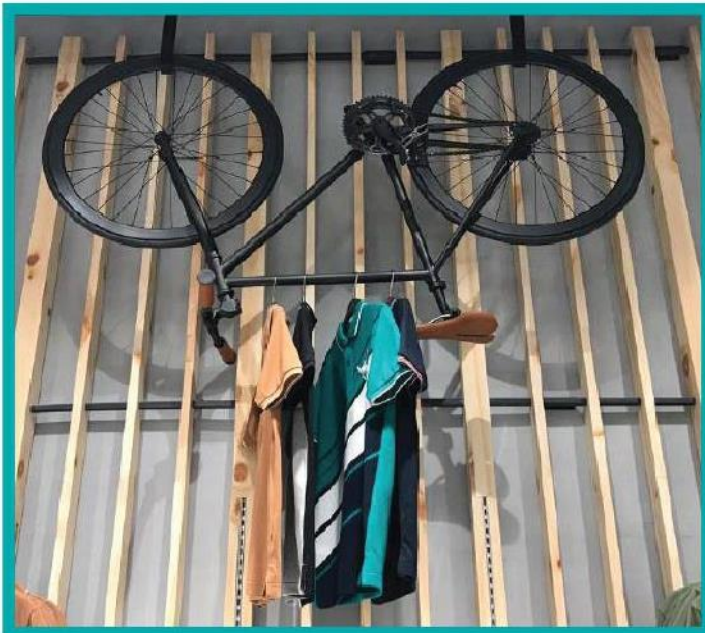


- Full wooden fabrication
- Metal laser cut
- All types of painting works
- Metal welding works



PRINTING

PRODUCTION



Audio - visual equipments



AUDIO VISUAL PRODUCTION

- JBL SRX / MRX Sound system
- Line array
- JBL Eon 10 and Eon 15's
- Robe Moving Heads spots / washes
- LED Par cans
- Profile Lights
- Fresnel lights
- Beams
- LED batons
- City colors
- Low fog machines
- Smoke & Haze

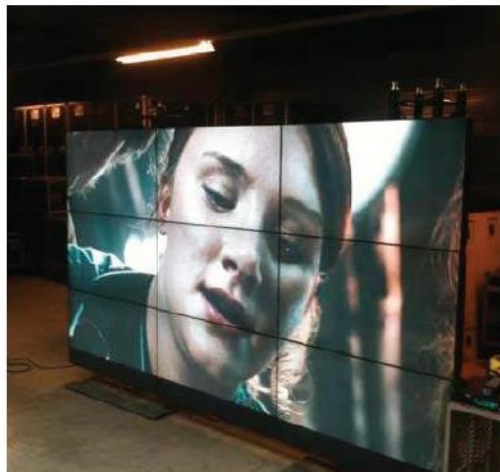


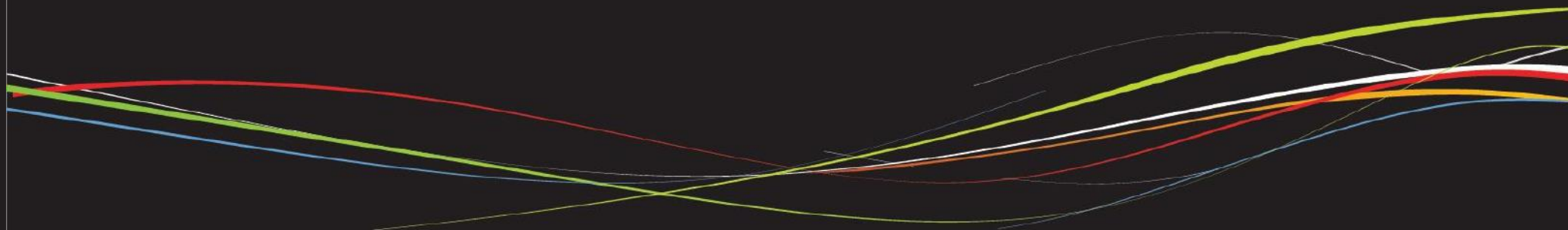
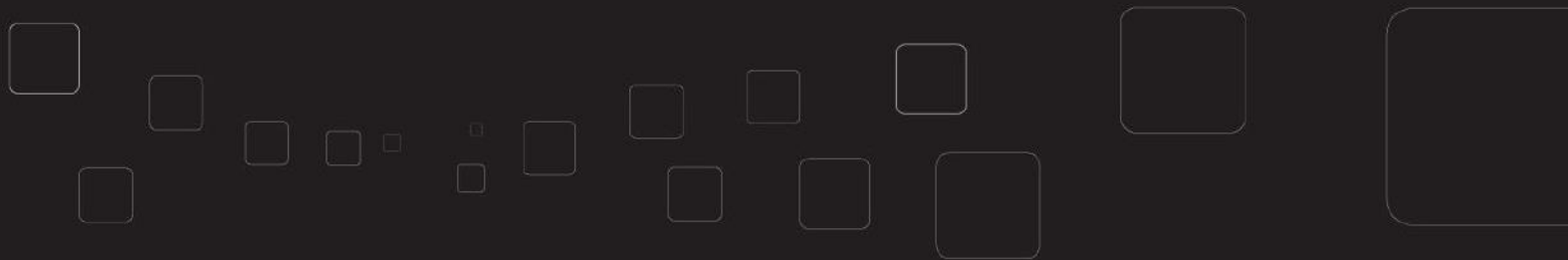
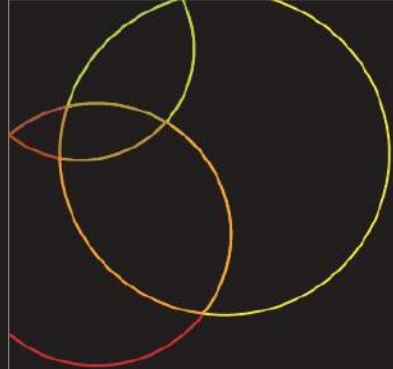
LED screens & projections



PROJECTION SYSTEMS

- P5 / P6 LED Screens
- Watch-out
- Seamless screens
- Outdoor projection
- Indoor projection
- 3D mapping
- LCD & LED TV
- Plasma TV





INTERIOR DESIGN L.L.C.

P.O. Box: 28437 | Warehouse No.29 | Al Tayer Warehouse
Al Quoz 1 | Dubai - United Arab Emirates.
Tel : +971 4 3214399 | Fax: +971 4 3936099
Email : info@eagleeyeinterior.com

www.eagleeyeinterior.com